



T1241

Granyte EXT transforms poured in place concrete, precast or masonry block to create elegant blocks of stone.

Granyte EXT delivers the rich traditional look of quarried granite, at the price of a veneer. Apply Granyte over poured in place concrete, precast, or masonry block walls to transform the utilitarian to the impressive.

Granyte is natural stone, but processed to remove the naturally occurring impurities and set in a clear exterior grade acrylic resin for long term durability and weatherability. The glistening mica adds to the ambiance. Simple to apply with basic plastering skills, Granyte is easily and rapidly installed. Visit our website for technical data and project photos in a variety of settings.

When needed, our acrylic modified Portland based render, REFORMIT (document T116), can smooth and level rough concrete walls or CMU walls to create the perfect substrate for Granyte.

Granyte seamless stone finishes are available in more than 12 standard colors; there are some custom coloration capabilities, but minimum quantities apply. Adding optional gold mica to any of the Granyte finishes adds interest to the wall.



Scan the QR code to link to a project study of the multi-story project at left. (Bethesda, MD)

Granyte colors in photos:

- Top right: Ocean Granite #150
- Top middle: Raw Silk #154
- Mid: Snow White #160
- Bottom: Raw Silk #154



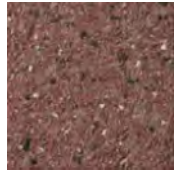
12 Standard Colors



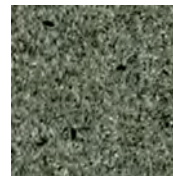
#158 Bloodstone



#154 Raw Silk



#157 Rosewood



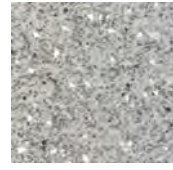
#155 Nordic Green



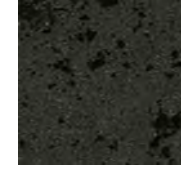
#160 Snow White



#160 Snow White
w/ Gold Mica



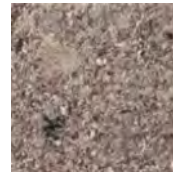
#151 Viscount White



#161 Zorro



#161 Zorro
w/ Gold Mica



#156 Labrador



#152 Zimbabwe



#150 Ocean Granite

GRANYTE

PERFORMANCE FEATURES

- 12 standard colors as well as custom colors
- Practical Washability – ASTM D4828 – high resistance to staining. Stains easily removed by ordinary cleaning
- Abrasion resistance – ASTM D 968, ASTM D 4060
- Breathable – perm rate of 45
- Class “A” – ASTM E 84
- Low VOC – 26 g/l
- Consult Product Data Sheet (T109) for testing details
- 10-year limited material warranty
- Integral color and colorfast