

## Notable Project Profile

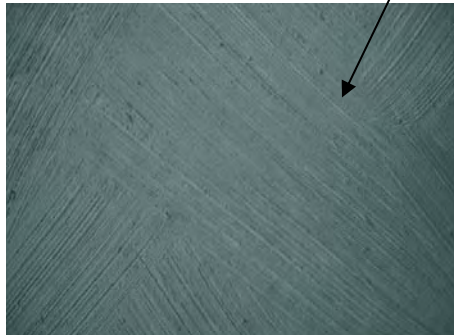
Job Name:	<b>HOBBY AIRPORT</b>
Location:	<b>Houston, Texas</b>
Product/Texture:	Duroplex <sup>®</sup> Flagstone DS II Spatula Stuhhi <sup>™</sup>
A/D firm:	Leo Daly
Installer:	Various

In a multi-phased expansion project, 2001-2003, Southwest Airlines upgraded an entire concourse at the busy Houston Hobby Airport. Duroplex<sup>®</sup> Flagstone DS II is featured on approximately 100,000 square feet of wall area, while Spatula Stuhhi<sup>™</sup> enjoys approximately 20,000 sqft. Hobby Airport handled almost 9 million passengers in 2007, with 80% of that number going through the SWA concourse. Both materials look great after 5-7 years of service, with no maintenance.

Due to continued customer operations during the renovation process, much of the work had to be completed on an “after hour basis”. This meant installation crews worked from 10:00 PM – 6:00 AM. The low VOC nature of the material and rapid cure time allowed newly installed areas to be placed into service quickly and with no inconvenience to the traveling public. With the exception of third party tenant space, almost all the wall surfaces were covered in Triarch materials. Duroplex was installed in all the main concourses ways, including at each gate location. Spatula Stuhhi was primarily installed in the SWA ticketing area as well as some limited areas within the two main concourses. The client is so pleased with the functionality of the material that additional uses are planned in 2009.



Typical Passenger Gate Area & Representative Duroplex® Flagstone DS II  
(Grey & white combination)





Spatula Stuhli™